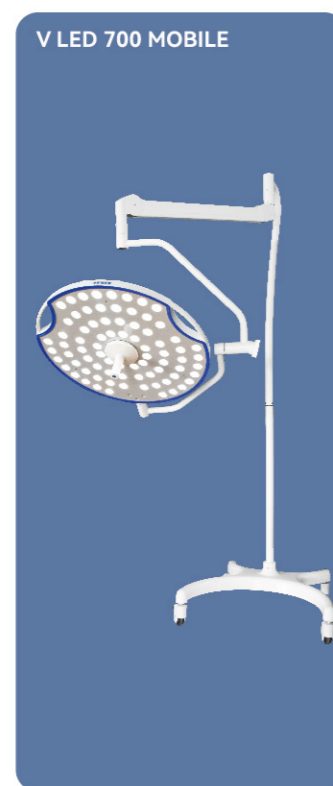


Product Display

V LED 500, V LED 500 MOBILE, V LED 500 MOBILE+BATTERY
V LED 700, V LED 700 MOBILE, V LED 700 MOBILE+BATTERY



Parameter

Model/ 型号	V LED700/700	V LED700/500	V LED500/500	V LED500	V LED 700
灯盘直径 (mm) Diameter of Light Dome(mm)	700/700mm	700/500mm	500/500mm	500mm	700mm
LED 数量 LED Bulbs(pcs)	78/78pcs	78/42pcs	42/42pcs	42pcs	78pcs
照明强度 (Lux) Luminance(Lux)	15,000~160,000/ 15,000~160,000	15,000~160,000/ 10,000~150,000	10,000~150,000/ 10,000~150,000	10,000~150,000	15,000~160,000
	Option: Adjustable Max. light intensity: V LED 700 can reach to 200,000Lux; V LED 500 can reach to 180,000Lux				
光斑直径 (mm) Focusable Light-field Size(mm)	120-250mm	120-250mm	120-250mm	120-250mm	120-250mm
色温 (K) Color Temp.	4000-5500K	4000-5500K	4000-5500K	4000-5500K	4000-5500K
照明深度 (mm) Illumination Depth(mm)	≥ 700mm	≥ 700mm	≥ 700mm	≥ 700mm	≥ 700mm
显色指数 (Ra) Red Color Index(Ra)	95	95	95	95	95
调光范围 Dimming Range	8%-100% 11 Steps				
内窥镜模式 Endoscopy Model	YES				
电源标准 Votage / Frequency	AC 110V~240V 50/60Hz				
功率 Power(W)	80/80W	80/50W	50/50W	50W	80W
LED 寿命 LED Bulb Service Life(hours)	≥ 50000h				
安装高度 Installation Height(Ceiling Type)(mm)	2800-3200mm				
选配 Optional	Emergency Battery (support 3-4hours) HD Camera System (Option HD,1080P, 4K camera solution)				

SHANGHAI MEDECO INDUSTRY CO., LTD.
SHANGHAI BEDFORMED INDUSTRY CO., LTD.
MERMAID(MEDICAL)INDUSTRY LIMITED

ADD: BUILDING 2,NO.108 WUXIANG ROAD,
JIADING DISTRICT SHANGHAI CHINA 201808
Email: info@medeco-medical.com

Wechat /Whatspp: 0086 13761409730
Tel: 0086 21 32509306
Fax: 0086 56868106



WHATSAPP BUSINESS



WEBSITE

www.medecomed.com

www.bedfordmed.com

www.medecomedicalequip.com

www.medeco-medical.com

We reserves the right to change specifications and design without notice. Version2023.09

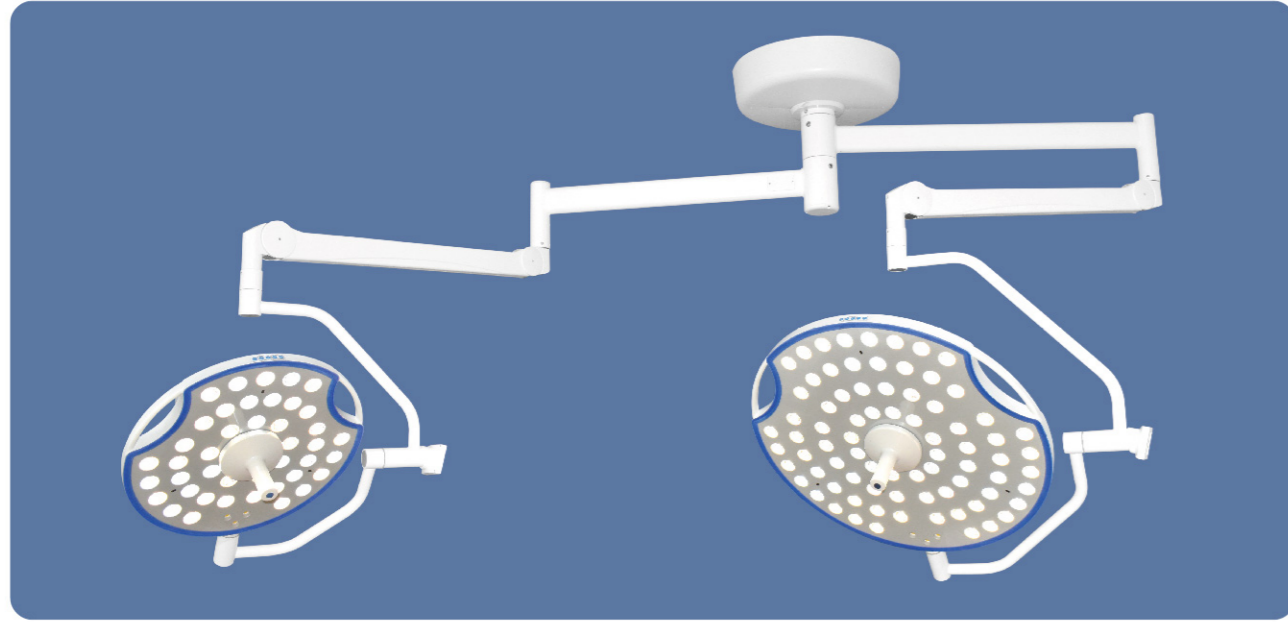


MEDECO
ONE STOP SURGICAL LIGHT SOLUTION
EXPERTS AND MANUFACTURER





New V Series LED Operating Light

MEDECO V 系列新型 LED 手术无影灯, 全封闭符合空气动力学流线型超薄灯体设计, 消毒, 操作更加方便, 灵活。拥有良好的医用照明效果和广泛的适用性, 是符合综合性医院, 美容院, 诊所, 口腔医院以及宠物医院手术室要求理想的手术无影灯照明系统。

BEDFORDMED® V series new LED surgical shadowless lamp, fully enclosed, conforms to aerodynamic streamline ultra-thin lamp body design, disinfection, more convenient and flexible operation. Having excellent medical lighting effects and wide applicability, it is an ideal surgical shadowless lighting system that meets the requirements of comprehensive hospitals, beauty salons, dental clinics, dental hospitals, and pet hospitals operating rooms.

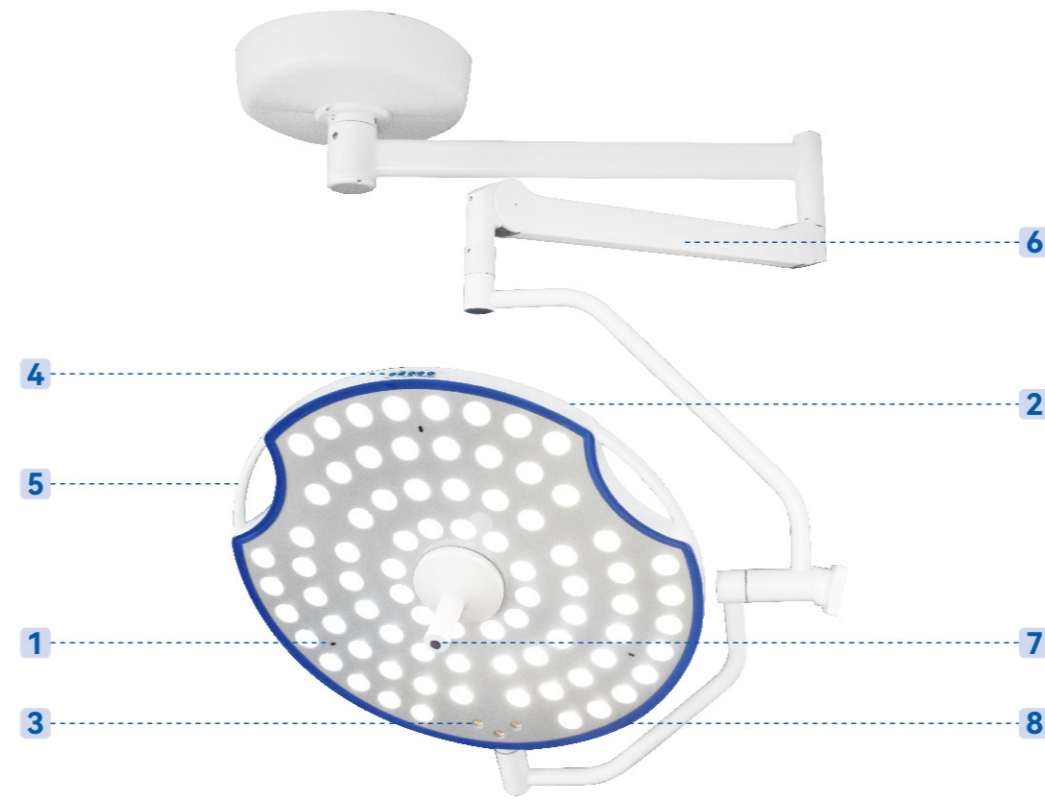


Main Performance Characteristics 主要性能特点

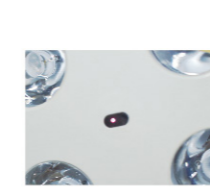
-  全封闭流线型超薄灯体设计, 符合空气动力学原理
Fully enclosed streamlined ultra-thin lamp body design, in line with aerodynamic principle
-  采用新型特殊耐高温材料的无影灯系统
The shadowless lamp system using new special high-temperature resistant materials
-  人体工程学设计
Ergonomic design
-  多重散热设计
Multiple heat dissipation design
-  原装进口 LED 芯片和光学透镜
Original LED chips and optical lens

Function 功能

-  双控模式
Dual control mode
-  360 度无限制旋转
360 degree unrestricted rotation
-  明亮均匀的照明效果, 11 档可调色温与照度
Bright and uniform lighting effect, the color temperature and illumination can be adjusted in 11 levels
-  增加了灯光补偿、电子调焦、腔镜微创手术照明功能
Additional functions such as light compensation, electronic focusing, endoscopic minimally invasive surgical lighting
-  铸铁底座采用压制成型稳定性强
The cast iron base adopts compression molding with strong stability

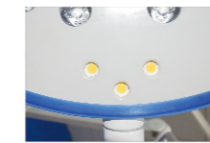


Detailed Description 详细描述



1. Built-in Optical Sensor

内置光学感应, 可以根据医生手术时的灯光情况实现自动灯光补偿, 电子调焦, 解放医生护士的双手减少细菌感染。
Built-in optical sensor can realize automatic light compensation according to the light conditions of doctors during surgery. Electronic focusing frees hands of doctors and nurses to reduce bacterial infection.



3. Endoscopic Function

额外采用的三个小灯珠适应于腔镜微创手术照明功能。
The additional three small lamp beads are suitable for the lighting function of endoscopic minimally invasive surgery.



5. Hollow out Design

灯头两边采用镂空设计, 方便医生以满足手术需求对手术灯角度进行随时随地的调整。
Both sides of the lamp head are hollowed out, which is convenient for doctors to adjust the angle of the surgical lamp anytime and anywhere to meet the surgical needs.



7. Easily Ejected

消毒手柄采用耐高温材质, 可实现高温灭菌消毒程序, 向内按压按钮消毒手柄即可轻松弹出。
The disinfection handle is made of high-temperature resistant material, which can realize high-temperature sterilization and disinfection procedures, and the disinfection handle can be easily ejected by pressing button inward.



2. One-time Molding

灯头采用一次成型的全封闭式流线型设计, 符合人体工程学, 适合现代层流手术室的需求。
The lamp head adopts a one-time molding fully enclosed streamlined design, which is ergonomic and suitable for the needs of modern laminar flow operating rooms.



4. Dual Control System

V 系列灯采用 LCD 触摸控制以及按压式双控系统, LCD 控制面板可实现 11 档参数调整, 满足医生对不同照度以及亮度的需求。
The V series of lights adopt LCD touch control and push-type dual control system. The LCD control panel can realize 11-level parameters adjustment to meet the needs of doctors for different illumination and brightness.



6. 360° Free Rotation

灯臂采用方臂, 可实现 360 度自由旋转, 满足手术室不同位置的需求。
The lamp arm adopts a square arm, which can realize 360-degree free rotation to meet the needs of different positions in the operating room.



8. Ultra-Thin Design

V 系列灯头采用超薄设计, 700 灯头边缘厚度为 32mm, 500 灯头边缘厚度为 28mm, 使消毒操作更方便外观更美观。
The V series lamp head adopts ultra-thin, the thickness of 700 and 500 head edge are 32mm and 28mm respectively, which makes the disinfection operation more convenient and appearance more beautiful.

Product Display

V LED 500/500, V LED 700/500, V LED 700/700

